



# DIAQUIP

AT THE CUTTING EDGE

DIAMOND WIRE

DQ2

ELECTROPLATED DIAMOND WIRE



**DQ2 Electroplated Diamond Wire is an aggressive, fast cutting bead with good life for cutting steel, concrete and other materials especially in the Decommissioning industry.**

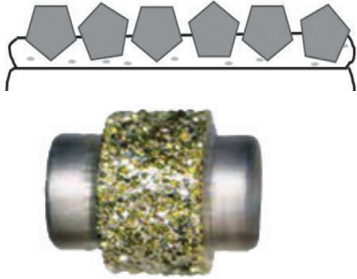
The diamond bead is conical in shape and comes in varying beads per metre depending on your budget and application. The wire can be supplied in any length required, and in endless loops also. in any length as suited to your machine. It's rapid. it lasts long and makes you money through decreased downtime and cut time.

[www.diaquip.com](http://www.diaquip.com)



# SPECIFICATION DETAILS

Electroplated



- **Surface Bonded:** The electroplating process bonds diamond to the steel body of the wire for very free cutting on a wide range of wire saws where speed is critical
- **Abrasion Resistance:** Polyurethane coating provides high resistance to abrasion resulting in lower friction for consistent cutting pressure and smooth operation
- **Conical Shape Bead Design:** Enhances coolant flow around the beads, maintaining lower temperatures and extending wire life

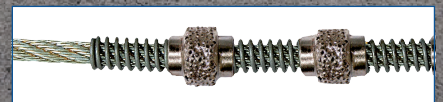
## TECHNICAL SPECIFICATION

Product description	Electroplated Diamond Wire
Application	Steel, concrete, hard materials, cast iron, composite materials
Number of beads	48bpm, 44bpm on less than 4m, or bespoke.
Bead diameter	8.5mmØ / 10.5mmØ / 12mm / 15mmØ
Wet/Dry	Wet
Lengths	Custom size lengths and endless loops
Structure	Plastic Injection + Spring
Break Strength	1,170 kgs
Tensile Strength	1,680 kgs
Temperature range	-60°C ~ 121°C
Shelf life	1-3 Year
Cable Diameter	4.8



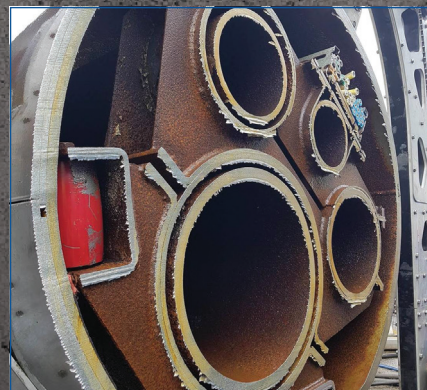
**DQ2 WIRES HAVE UNDERGONE A WIRE STRENGTH TEST;**  
**772.65 kg.f**

More data available on request.



### WIRE STRUCTURE;

All our wires are made from an extremely high quality structure; highest grade rubber coating, strong steel spring spacers, multi-stranded steel carrier wire, and diamond beads manufactured with the latest technology available.



**AVAILABLE IN ENDLESS LOOPS**